

# 65" Interactive White Board (M2 & M3 Series)

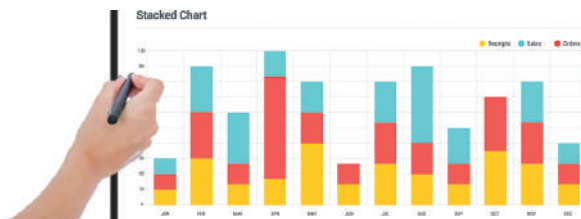
Also Available in 55", 75" & 86"



## Modern Interactive Whiteboard Display

Reddie's latest model of the Interactive White Board series is not only sleek and efficient but it boasts convenience with easily accessible ports. It couples new generation intelligent features with proven functionality. It integrates white board writing, wireless projection, audio and video all into one. It is suitable for a plethora of uses which includes training rooms, open office areas, management offices and boardrooms just to name a few.

- Clean Matte Finish



## 4K Display

The only thing better than full HD resolution is the 4K Ultra HD delivered by Reddie's Interactive White Boards. Superior image quality with resolution four times higher than full HD, it is optimized for viewing distances near and far to ensure that your content remains the focus of your visual communication.



**4K**

4K Display



Collaboration Tools



Wireless Mirroring



5 Year Warranty



Optional Smart Pen



Etched Anti Glare Glass



20 Touch Points



Integrated Speakers & Microphone



Optional OPS PC



Optional Built In Camera

# Introducing our New COLLAB PACK:

with built in Apps

## The Ultimate Collaboration Tool

### Multi Device Wireless Mirroring

Our device allows you to project the displays of up to four smartphones, tablets, laptops, Macs or PCs. With the use of a mobile device, you can take control of the screen or mirror the display in both directions.

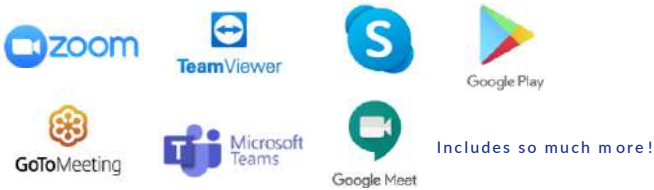


### Easy File Sharing

Once your device is connected, you can quickly and easily share documents, videos, images and audio files stored on your smartphone, tablet, laptop or PC directly to the touch screen. You can also share files from your touch screen to your device via email or by scanning a QR code with your mobile or tablet

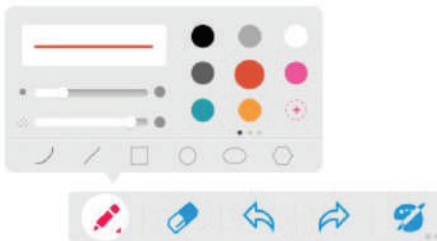
### Integrated Apps and App Store

Our whiteboards have a number of pre-installed integrated apps that you and your team are likely to already be familiar with.



### Diversified Working Tools

Heighten your audience experience by changing the background color of the display as well as the thickness and color of your drawing tools.



### Free Hand Annotations

Make notes instantly with the touch of a finger or any opaque object. The device supports full channel annotations with a hidden side bar and menu. This feature allows for an authentic handwriting experience during presentations.



### Connect via Reddie's Share Dongle

Mirror Visual communication from your PC onto the display effortlessly with the use of Reddie's Share Dongle. Just insert and launch the built in software without the need for other applications



### Optional Smart Pen Stylus and Remote Control

Optional smart pens are available with your purchase of our Interactive White Board and allows for the control of the display from anywhere in the room. You can save annotated documents, navigate through a PowerPoint presentation or website and go back to the Collab Pack home screen. Devices do come complete with a remote control and a single writing pen.



## Other Features

### Optional Windows OPS

Reddie white boards integrate seamlessly onto existing networks. An OPS PC can be installed into the display which makes for extreme flexibility when switching between Android and Windows OS.



### 20 Touch Points

This allows multiple attendees to use the board simultaneously with their fingers or any other opaque object. Reddie boards have a 3mm touch accuracy and 8ms response time for optimized efficiency.



Touch Points



### Easy Access Controlls

These displays, with infrared touch, can be converted for use as a touch screen monitor by connecting a computer via HDMI and USB.



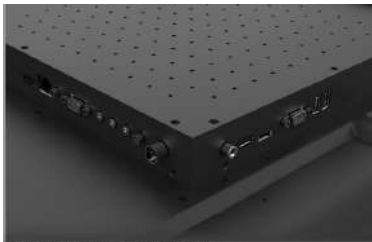
### FREE Wall Mounted Bracket

Our interactive white board comes complete with a **FREE** wall mounted bracket which makes displaying your visual communications so much easier.



### Easy Access Ports

Our displays are designed with ease and efficiency in mind. No need to waste time locating hard to find ports, they boast HDMI, AV and USB ports. Displays also have built in Wifi and Bluetooth



### Etched Glass

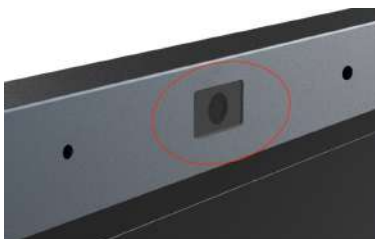
Improves responsiveness to allow for smoother touch gestures. This feature is especially useful for multiple users. The anti-glare coating also diffuses external light which improves optical clarity.



Etched Glass

### Optional Built in 8 Mega Pixel Camera & Microphone

Our Interactive White Board has an optional built in 8 mega pixel camera to allow team members to view your visual communication in absentia. Having a high quality built-in camera allows presenters to extend more seats at the table by allowing participants to connect and be a part of presentations remotely. The optional camera is a part of Reddie's M3 Interactive White Board model.



8 Mega Pixel Camera

### Integrated Speakers

Displays have two integrated 10W speakers in the front to amplify the audio element of your presentations.

10W, 8Ω x 2  
Integrated Speakers



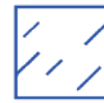
# Key Features



INTEGRATED ANDROID PC



20 POINT INFRARED TOUCH



ETCHED GLASS



EASY ACCESS PORTS



5-GHZ INTEGRATED WIFI



5 YEAR WARRANTY



3840x2160

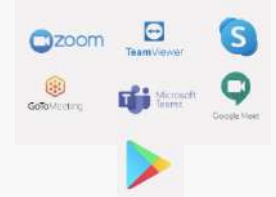
4K DISPLAY



OPTIONAL OPS



OPTIONAL SMART PEN STYLUS



INTEGRATED APPS & APP STORE

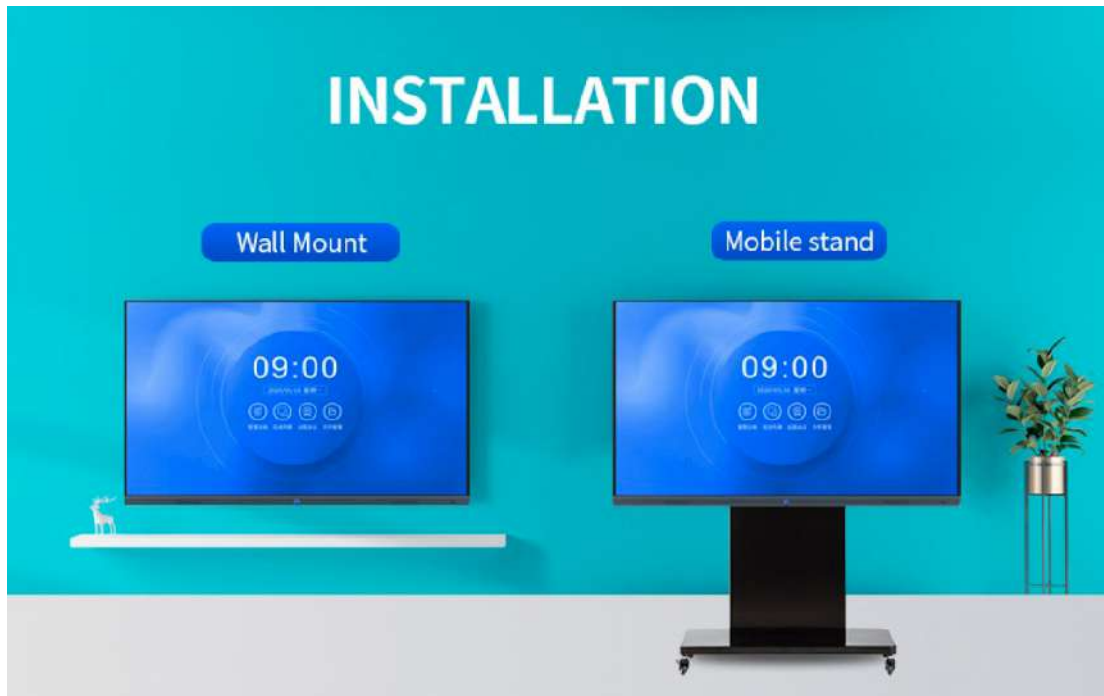
## Specification Table

		65 Inch
Panel	Resolution	3840 x 2160
	Display Area (mm)	1428.48 (H) x 803.52 (V)
	Contact Ratio	1200:1
	Brightness (cd/m <sup>2</sup> )	350
	Colour	1.07G colors
	Colour Depth	10 Bit
	Viewing Angle	178°
	Contrast Ratio	1200:1
	Lifespan	>50,000 Hours
Touch	Touch Technology	Infrared
	Touch Points	20 (10 Touch Points in Collab Pack Software)
	Glass Hardness	Tempered Glass
	Response Time	≤5ms
	Touch Point Accuracy	± 1mm
	Touch Resolution	32768 x 32768
Audio	Speaker Type	Stereo 2 x 8Ω10W
AV Inputs/Outputs	Input Interface	RS232, YPBPR IN, HDMI IN x2, RJ45 x2, Touch USB, VGA, USB 2.0 x 2, AV IN, RF-IN
	Output Interface	COAX OUT, EARPHONE, AV OUT, HDMI OUT
	Front Port	USB 2.0 x 2
Power	Power Supply	(50Hz~60Hz)
	Power Consumption	About 180W
Mechanical	Unit Size (LxHxD mm)	1485 x 897.5 x 91.6
	Package Size (LxHxD mm)	1653 x 1037x 235
	Wall Mount Holes Holes (mm)	400 (H) x500 (V)
	Net Weight (kg)	47.8
	Gross Weight (kg)	61.80
Environmental	Operating Temperature	-10 °C to 50 °C
	Storage Temperature	-20°C to 60°C
	Operating Humidity	10% to 90%
	Storage Humidity	10% to 90%
Computer	CPU/GPU	Cortex A73* 2 A53*2 1.5 GHz
	RAM	3G DDR3
	Chip	MSD848 (8386)
	Hard Drive/Internal Memory (eMMC)	32 GB
	USB	USB 2.0 x 4
	LAN	10/100 Ethernet Port
	Wi-Fi	2.4G for Internet ; 5G for screen casting
Accessories	Included	Conference Machine, User Manual, Remote Control, Wall Mount Bracket, Power Cable, Whiteboard Pen , Reddie Share Dongle
	Optional	Smart Stylus Pen, Floor Stand/Trolley, Ceiling Mount
Warranty	Warranty Period	5 Year Warranty
	Technical Support	Lifetime

## Available Sizes



## Installation Options



## Teleconferencing

Optional 4K Camera Available



### Technical Drawing

