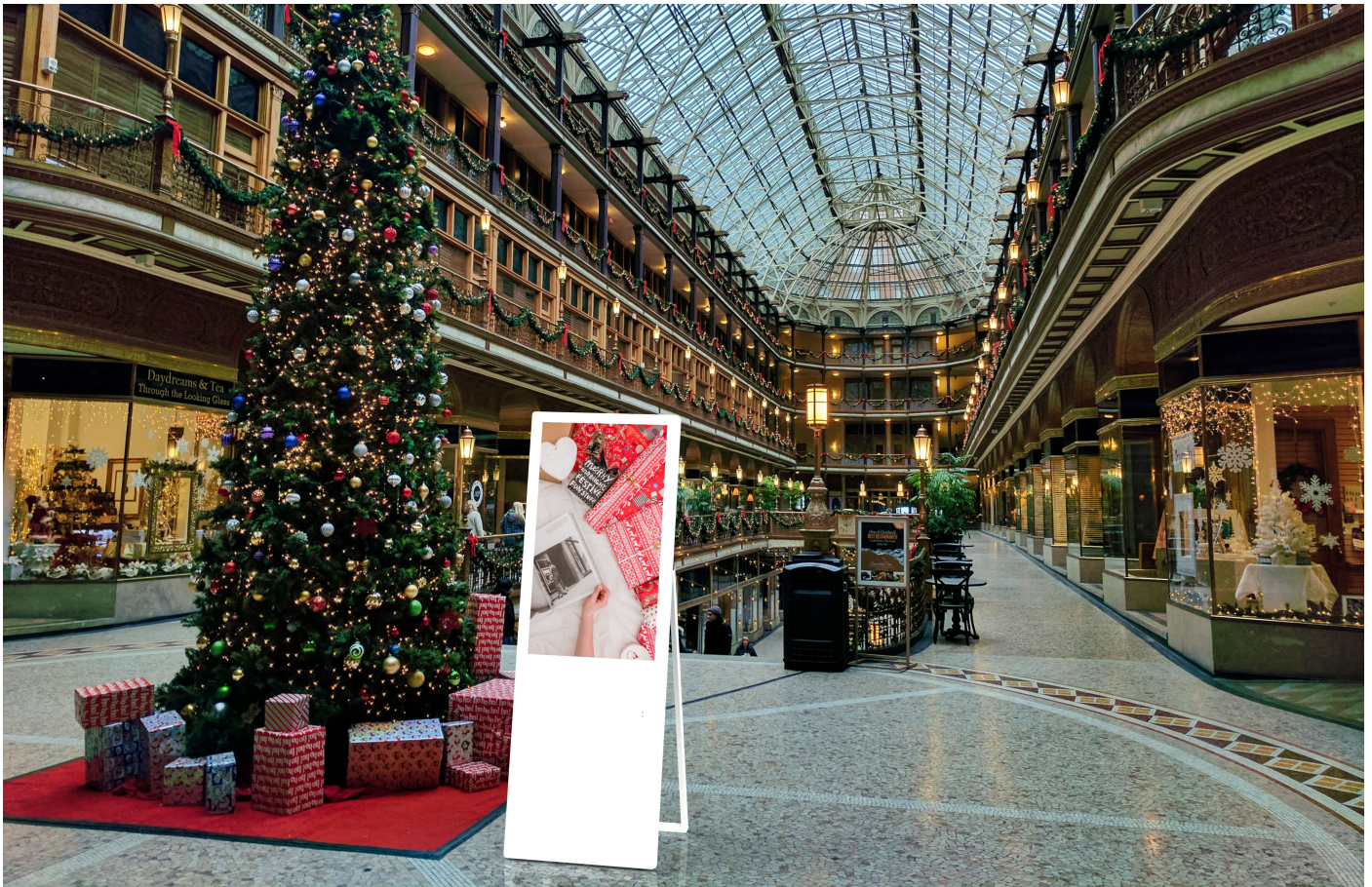


32", 43", 49" 55" Digital Android Indoor A-Board (EKAPAD Series)



Digital A-Board

Stand out from the crowd with this innovative portable digital signage solution. A mains plug is no longer needed for you to deliver your digital messaging, opening up a whole world of new possibilities.

Model EKAPAD Series A
Available in 32", 43", 49", 55"



Model EKAPAD Series B
Available in 32", 43", 49"

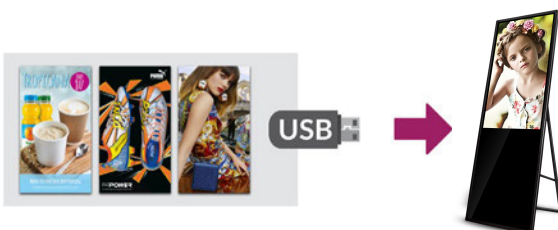
PCAP Touch (Optional)

Having up to 10 touch points allows you to manipulate images, zoom in and out as well as perform many other touch gestures; much like you would with a domestic tablet. It also allows for multiple users interacting with the screen at one time.



Plug and Play

Plug and Play is the most straightforward way to upload content to the screen. Simply load images and videos on a USB stick, insert in the display, wait for your content to copy over and then remove. Your images and videos will now play in a continuous loop.



350cd/m² IPS Panel

The high brightness LCD panel used in this display makes it ideal for brightly lit public spaces.



Other Features

Power Via Mains Plug

The Digital Android Battery A-Board can be powered via mains electricity supply by connecting the charging cable to a wall socket



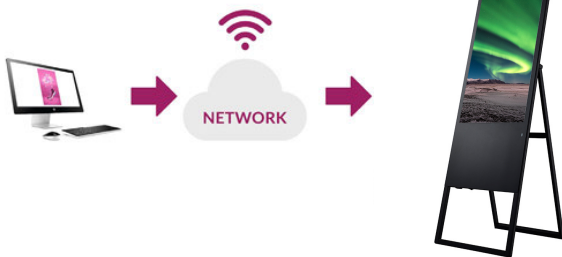
Foldable Legs

These freestanding displays are a fully portable solution and can be easily moved by one person. With foldable legs it makes it easy to set-up and to store.



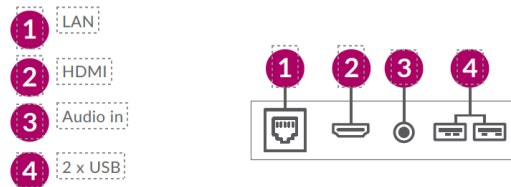
Optional Network Upgrade

For a small charge you can upgrade your screen to be networked, allowing you to connect your screen via Wi-Fi, LAN or 4G, then remotely update it over the internet.



Multiple Inputs

Should you need to use the screen as a monitor you can connect it to an external source, like a PC or media player, using the HDMI input and 5mm audio jack inputs.



Key Features MODEL: EKAPAD SERIES A



TEMPERED GLASS FRONT

VIPS

350CD/M² IPS PANEL

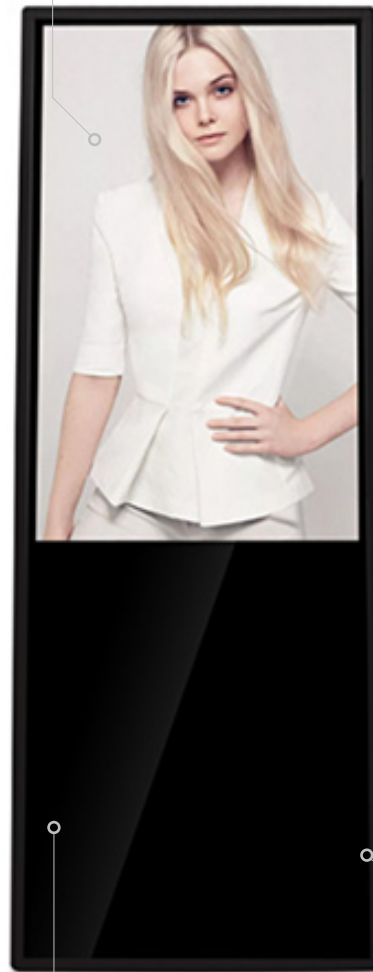


OPTIONAL NETWORK UPGRADE



FOLDABLE LEGS

PLUG AND PLAY

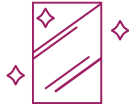


INTEGRATED ANDROID MEDIA PLAYER

STYLISH OUTER GLASS ENCLOSURE



Key Features **MODEL: EKAPAD SERIES B**



TEMPERED GLASS FRONT

VIPS

350CD/M² IPS PANEL



OPTIONAL NETWORK UPGRADE



FOLDABLE LEGS

PLUG AND PLAY



INTEGRATED ANDROID
MEDIA PLAYER

STYLISH OUTER
METAL ENCLOSURE



Spec Sheet

Panel				
Screen size	32inch,	43inch	49inch	55inch
Panel Stype	a-Si TFT-LCD	a-Si TFT-LCD	a-Si TFT-LCD	a-Si TFT-LCD
Active area(mm)	698.4*392.85	941.184 *529.416	1073.78*604	1209.6 × 680.4
Aspect Ratio	16:9	16:9	16:9	16:9
Resolution	1920*1080P	1920*1080P	1920*1080P	1920*1080P
Viewing Angle(Typ.)(CR>10)	89/89/89/89	89/89/89/89	89/89/89/89	89/89/89/89
Brightness	350cd/m2	350cd/m2	350cd/m2	350cd/m2
Contract Ratio (Typ.) (TM)	1200:1	1200:1	1200:1	1200:1)
frequency	60Hz	60Hz	60Hz	60Hz
Lifetime	≥ 30,000hours	≥ 30,000hours	≥ 30,000hours	≥ 30,000hours
Touch Features (Optional)	10 points Pcap touch	10 points Pcap touch	10 points Pcap touch	10 points Pcap touch

Android system	
System	Android 5.1
CPU	RK3288 Quad Core, 1.8G Hz
RAM	DDR3 2G
ROM	TSD FLASH 8G
TF card	Support 32G TF card
Port	USB x2, HDMI OUT x1, Standard TF Card Slot x1, RJ45 x1, DC 12v
Network	WIFI, RJ45
Speaker	5W+5W

Power	
Power	AC110 ~ 240V
Operation Temperature	0°C~50°C
Storage/Working Humidity	-20°C~60°C

Accessories	
Power adaptor,WIFI, Antenna,keys	